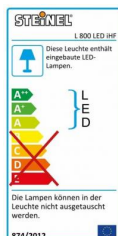
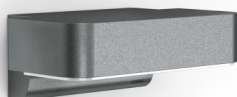


Outdoor light

L 800 LED iHF

EAN 4007841035747



Functional description

This outdoor sensor-switched light translates intelligence into magnificent looks and technology. This high-quality designer piece is meticulously thought-through and crafted with particular care from long-life materials. In developing new lights, our products' future value is also important to us. Intelligent technology has a permanency and constancy about it – is brighter, cooler and smarter. For the first time, we have managed to make a light's sensor completely invisible. This result is a highlight LED product for illuminating your home's exterior walls with stunning effect. The L 800 iHF Downlighter. New: optional manual override for 4 hours.

Technical specifications

Dimensions (L x W x H)	88 x 230 x 145 mm
Mains power supply	230 – 240 V
Sensor Technology	iHF (intelligent high-frequency technology)
Transmitter power	< 1 mW
Output	10 W
Luminous flux	490 lm
Colour temperature	3000 K
Colour variation LED	SDCM3
Colour Rendering Index CRI	80-89
With lamp	Yes, STEINEL LED system
Lamp	LED cannot be replaced
LED life expectancy (max. °C)	50000 h
Drop in luminous flux in accordance with LM80	L70B10
Base	without
LED cooling system	Active and Passive Thermo Control
With motion detector	Yes
Detection angle	160 °
Sneak-by guard	Yes
Electronic scalability	Yes
Mechanical scalability	No
Reach, radial	r = 5 m (35 m ²)
Reach, tangential	r = 5 m (35 m ²)
Photo-cell controller	Yes
Twilight setting	2 – 2000 lx
Time setting	5 s – 15 min
Soft light start	Yes
Continuous light	selectable, 4h
Impact resistance	IK00
IP rating	IP44
Protection class	II
Ambient temperature	-20 – 50 °C
Housing material	Aluminium
Cover material	Plastic, opal

<https://www.steinel.de/>

Outdoor light

L 800 LED iHF

EAN 4007841035747

Manufacturer's Warranty

3 years

Version

Anthracite